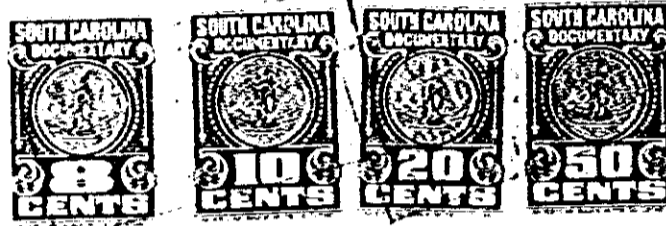


to a point; thence S. 18 E. 198 Feet to a point, thence S. 76 E. 73 Feet to a point, thence S. 28 E. 203.5 Feet to a point thence S. 17 E. 368 Feet to a point; thence 20 E. 462 feet to a point thence S. 32 E. 660 feet to a point, thence N. 55 E. 561 feet to a point, thence N. 36-45 W. 1.955 feet to a point on said road N. 74.00 E. 149.7 feet; thence crossing said road N. 36 E. Approximately 375 feet more or less to a point; thence 251 feet to a point. Thence N. 42; W. approximately 251 feet more or less to a point on creek; thence with said creek in a southeasterly direction of beginning.



RECORDED NOV 14 '74 12409

5 - 887
RECORDING FEE
PAID \$ 2.50
X 12409 A
NOV 14 1974

Mortgage

FROM
*J. Hugh E. Brumble and
William F. Brumble*
TO
U.S. Life Credit Corp.

County of Greenville
STATE OF SOUTH CAROLINA

No.
This instrument and the assignment thereof were filed
for record in my office in the County aforesaid on the
11th day of November 1974
at 2:50 o'clock P.M. and recorded in
Book 1327 of REV
Page 533

\$ 1,800.00
123 Acs. Gap Creek, Cleveland Tp.

123 A 233

0534